



HELP STOP ILLEGAL FIRE HYDRANT USE!

Fire, Police, Public Works, and the Oakland County Water Resources Commissioner's office (WRC) are the only entities who may operate a fire hydrant legally. Use of fire hydrants by anyone else is illegal by local ordinance and enforced by local law enforcement agencies.

This ordinance protects your drinking water, reduces water quality complaints and ensures the use of water for fire protection. Hydrants that are used illegally may be damaged or may freeze, causing the fire hydrant to be inoperable during an emergency. The water theft and the cost of the fire hydrant repairs will be charged to the water system and could potentially increase the water rates for all customers.

Please contact your local Fire Department, Police Department, or the WRC at (248) 624-6366 if you witness illegal fire hydrant use or any questionable water use.

MANHOLE COVERS



A manhole cover serves an important purpose and must be visible. If you have one in your yard, do not cover it with

land-scaping materials or mulch. Maintenance personnel need to access the cover in order to perform a variety of jobs related to your sewer or water distribution system. Covering the manhole cover could mean increased costs and could even impede emergency situations.

CURB STOP LIDS

The photo to the right is a four-inch round lid that covers a valve called a curb-stop. The valve is buried below the ground to protect it from freezing.



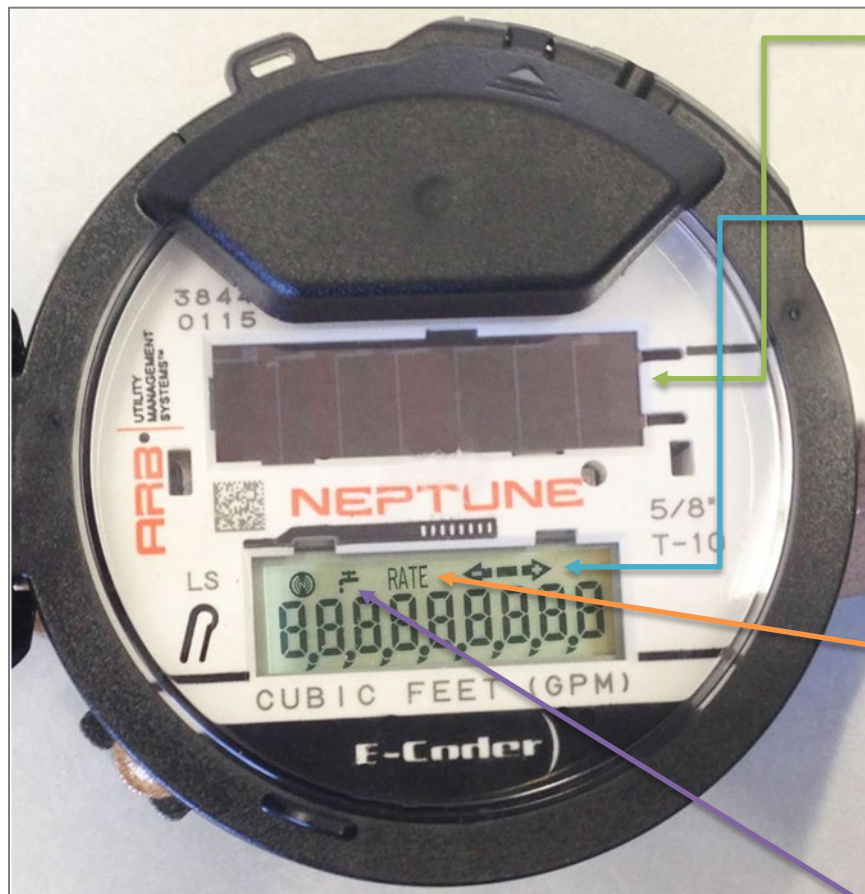
When a repair to the water system is needed the valve can be closed to stop the flow of water into your home. This lid should be kept free of debris, mulch or other landscaping materials. Damaging or burying this lid could mean higher costs for you because it is harder to locate, dig up and repair.

**DO NOT OBSTRUCT MANHOLE
COVERS OR CURB STOP LIDS!**

WATER METERING & MAINTENANCE FOR YOUR HOME



One Public Works Drive
Building 95 West
Waterford, MI 48328-1907
(248) 858.0958
www.oakgov.com/water



Solar Panel

Supplies the power for the LCD panel.

Flow Indicator

The arrow image shows the direction of water through the meter

Reverse flow



Forward flow



Rate of Flow

Average flow rate (gallons per minute) is displayed every 12 seconds on the LCD display.

Leak Indicator

No Faucet: No leak indicated

Flashing Faucet: Indicates a possible intermittent leak because water has been used for at least 12 hours in the last 24 hours.

Constant Faucet = Indicates a possible leak because water has been used every hour during the last 24 hours.

A MESSAGE FROM THE COMMISSIONER

Periodically, you will receive inserts, like this one, with your water bill. It is part of our effort to improve service and answer some of the questions you may have about our operation.



That's why we enjoy hearing from you. Your questions and comments are important to us because it helps us do a better job for you, our valued customers.

Our goal is to be the best so we can do the best — for you.

Sincerely,

Jim Nash

HOW TO READ YOUR WATER

Using a flashlight, shine and hold the light on the solar panel to activate the LCD displays. The digital display will alternate between meter read and rate of flow.

For 5/8", 3/4" or 1" meters read the first 4 digits from the left to see billing units (100 cubic feet).

For 1 1/2" or 2" meters read the first 5 digits from the left to see billing units (100 cubic feet).